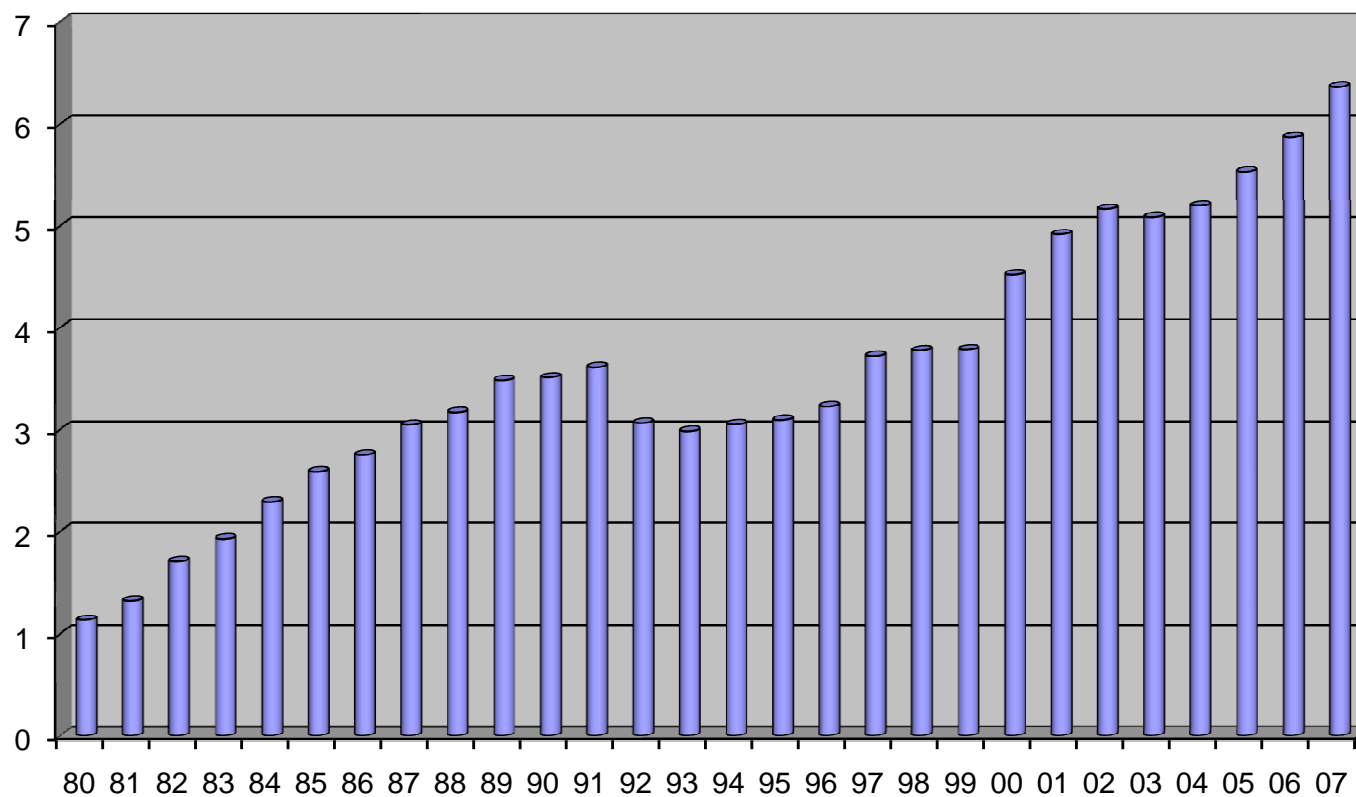


# LA FILIERE CUIR

## IMPORTATIONS en milliards d'euros



80	1,130
81	1,316
82	1,707
83	1,930
84	2,286
85	2,588
86	2,748
87	3,044
88	3,167
89	3,478
90	3,507
91	3,610
92	3,065
93	2,981
94	3,050
95	3,094
96	3,223
97	3,718
98	3,776
99	3,784
00	4,520
01	4,911
02	5,160
03	5,080
04	5,196
05	5,531
06	5,869
07	6,362